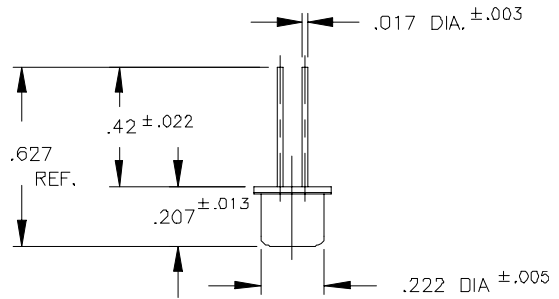
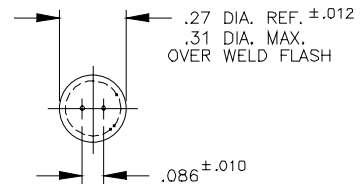


**Part No: 20243 A1/2S Series
Motion/Vibration Switch – Mercury**



- Features:**
- * Un-Insulated
 - * Form: NO/NC/SPST/Mount dependent
 - * Mount electrodes down for motion/vibration
 - * Dual Electrodes
 - * Hermetically Sealed
 - * Small Package Size
 - * Low Contact Resistance
 - * Long Life



Normally closed position with electrodes downwards

Drawing dimensions in inches.

Must Make / Break Angle * :	Motion / Vibration Activated – Application Dependent
Maximum included Angle:	
	* from vertical 0° reference
Switch Ratings:	
Max Switching Voltage:	12VDC
Max Switching Current:	0.5A
Initial Contact Resistance (Max):	1 Ohm @ 5V/1mA
Stand Off Voltage (contact to contact):	1500V
Operating Temperature:	-38° to 220°F / -38° to 105°C
Storage Temperature:	-40° to 356°F / -40° to 180° C
Typical number of operations at specified load:	10,000,000
G-Force Activation G-Level/Range:	Application Dependent
Dimensions:	
Weight per 100pcs. Lbs / Kgs:	0.31 / 0.13
Body Length (less leads). Inches / Millimeters:	0.207 / 5.26
Maximum Diameter. Inches / Millimeters:	0.31 / 7.87
Materials:	
Lead Wire Type:	N/A
Lead wire length/skive/termination:	N/A
Finish:	Tin



© American Electronic Components Inc 2006

American Electronic Components Inc.,
 1101 Lafayette Street, Elkhart, Indiana. USA
 Tel: +1-574-295-6330 Fax: +1-574-293-8013
 Email: sales@aecensors.com
<http://www.aecensors.com>